

PTC University 2010

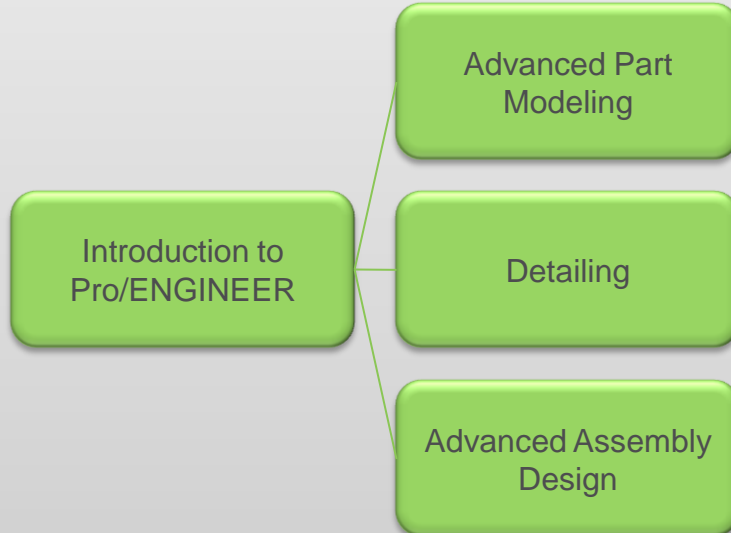


October 2010

- > Best Practice Academy
- > eLearning
- > PTC University Sweden



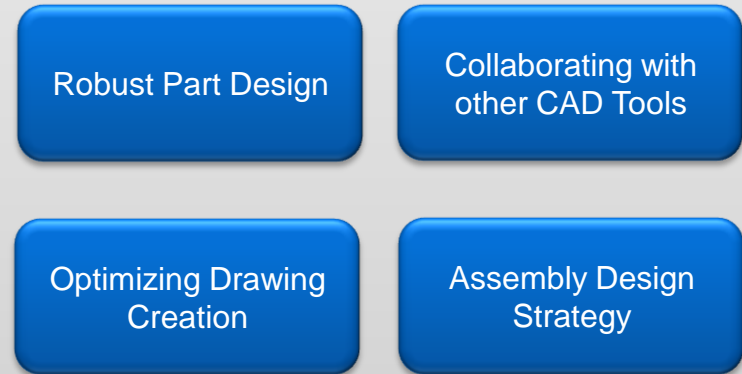
Core Training *Individual Focus*



- Focuses on individual skill building
- Creates an understanding of feature/function capabilities
- Delivered via classroom, virtual, or eLearning



Best Practice Academy *Organizational Focus*



- Focuses on product development best practices
- Creates organizational specific working methods
- Optimizes functionality, quality, performance
- Delivered via configured workshops and learning programs

> Best Practice Overview

- Introduces you to methods of pre-configured modules
- Leverages PTC Best Practices

> Learning Consultation

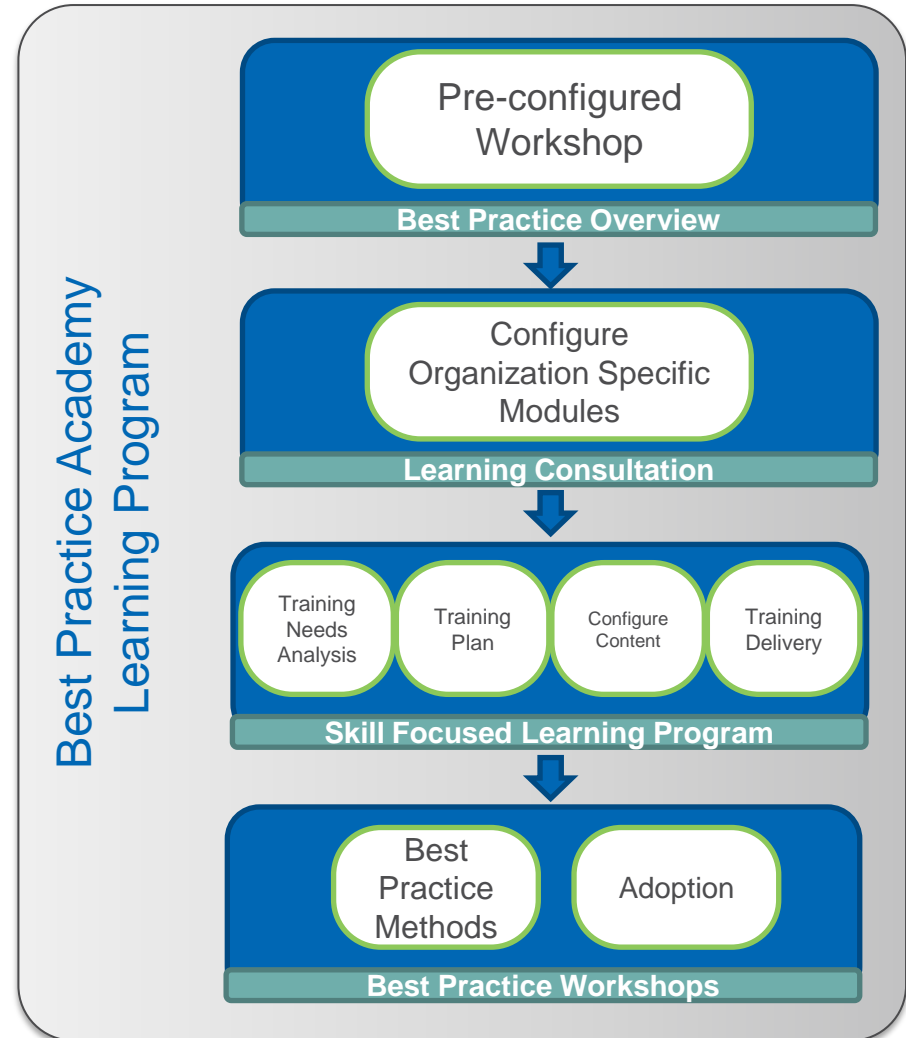
- Collaborates with you to identify core focus areas
- Builds alignment on core objectives within your organization
- Conducts interactive workshops with core SMEs on configured module adoption for your organization

> Skill Focused Learning Program

- Assess individual capabilities to utilize best practice modules
- Builds individual skills
- Re-assess to ensure successful adoption

> Best Practice Workshops

- Interactive sessions to teach specific methods around organizationally configured modules
- Tailored to specific audiences and needs
- Leads to targeted follow-up to drive adoption



> Robust Part Design

- Structuring Models
- Making Models Transparent
- Creating Robust Models
- Sharing Part Geometry

> Assembly Design Strategy

- Improving Assembly Performance
- Creating Assembly Instances
- Sharing Assembly Geometry
- Structuring Assemblies
- Assembly Design Scenarios

> Collaborating with other CAD Tools

- Importing MCAD-Data Planning
- Importing MCAD-Data tools
- Importing MCAD-Data Examples

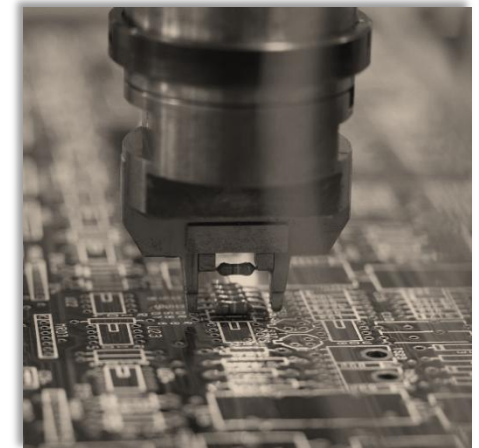
> Optimizing Drawing Creation

- Planning Drawings
- Pre Configuring Drawings
- Improving Drawing Quality
- Optimizing Drawing Performance
- Drawings Scenarios
- Managing Tolerances
- Creating Drawing Table

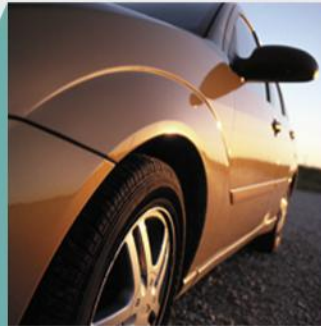
> Other Modules

- Documenting Assembly Process
- Selecting Curves
- Selecting Surfaces

- > Improve product quality, reduce re-work
- > Decrease time to market
- > Improve workflow through process adoption
- > Reduce burden on internal experts to create and research best practices
- > Increase adoption through improved integration of process and technology



eLearning



Constantly changing schedules

Justifying time away from the office

Geographically dispersed teams

Multi-tasked work environment

Need learning on-demand



Convenient

- Available 24/7/365 from any location
- Stop and start training at any time

Comprehensive

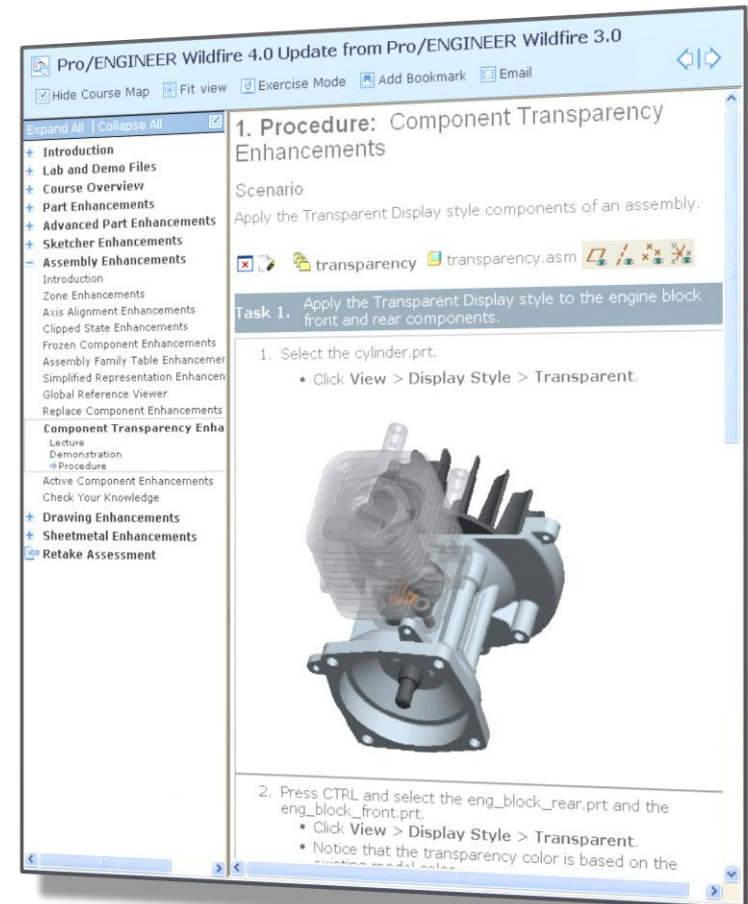
- eLearning for all PTC product families
- Includes lectures, demos, & lab exercises
- Learn new topics & advanced features

Efficient

- Short, easy to absorb modules
- Quickly search for specific topics

Delivers Value

- Calculate skill retention with assessments
- Track & measure progress with PTC University Precision LMS



“30% of software training done in 2009 was eLearning”

Source: Forrester Research

Comprehensive Content

- 4,000+ hours of quality learning material
- Same content as Instructor-led training
- Covers basic and advanced topics
- Available in 9 different languages

The screenshot displays the Precision LMS interface. At the top, it says 'PRECISION LMS' and 'PTC University'. Below that, there are navigation tabs: 'Home', 'Find Training', and 'Administration'. A user's name 'My Bookmarks | My Account | Help | Log Out' is visible in the top right. The main content area is titled 'Welcome to Precision LMS' and includes a sub-header 'The tabs below allow you to see information on your current learning items and learning items that you have completed.' There are two tabs: 'Current Learning' (selected) and 'Completed Learning'. Under 'Assigned Learning', there is a table with columns 'Title', 'Target Date', 'Duration (Hours)', and 'Actions'. The table contains one row: 'Mechanism Simulation using Pro/ENGINEER Wildfire 3.0' with a target date of 'Apr 28, 2008' and a duration of '8' hours. Under 'Self Started Learning', there is another table with columns 'Title', 'Duration (Hours)', and 'Actions'. It contains two rows: 'Windchill PDMLink 9.0 - System Orientation' with a duration of '4' hours, and 'Windchill ProjectLink 9.0 - Application Orientation' with a duration of '1' hour.

Pro|ENGINEER®

- Pro/ENGINEER
- COACH for Pro/ENGINEER

Windchill®

- Windchill
- Windchill PDMLink
- Windchill ProjectLink
- Windchill ProductPoint
- FlexPLM

Arbortext

- Arbortext
- Arbortext IsoDraw

ProductView™

Mathcad®

CoCreate®

Pro/FICIENCY

> Administrators can:

- Configure existing eLearning
- Integrate organizational content
- Auto generate assessments
- Create new assessments
- Assign group owners

> Managers can:

- Create team development plans
- Track team enrollments and transcripts
- Access real-time individual and team progress reports
- Export data for additional analysis

PRECISION LMS PTC University

Home Find Training Administration My Bookmarks My Account Help Log Out

Manage Custom Content

Use this page to create custom courses and assessments. Note, you must have a license to at least one content library in order to create a course and you must have a license for the Proj/FICIENCY Library to create assessments.

What are you looking for?

Search Within Results

Filters

Category: Version:

Type: Language:

Showing courses 1 to 4 of 4 courses

Title	Author	Date Created	Category & Version	Language	State	Actions
AAA G's course	gklein	2009-04-28	Pro/ENGINEER Wildfire 4.0	English	Development	Edit Delete Admin Details
All Questions only	Ishenwai	2009-04-16	Pro/ENGINEER Wildfire 4.0	English	Released	Copy Delete Admin Details
Jay Test	jidupont	2009-04-21	Pro/ENGINEER Wildfire 4.0	English	Development	Edit Delete Admin Details
New Custom Course	lagarwal	2009-04-22	Pro/ENGINEER Wildfire 3.0_Pro/ENGINEER Wildfire 4.0	English	Released	Copy Delete Admin Details

PTC University | About

PRECISION LMS PTC University

Home Find Training Administration My Bookmarks My Account Help Log Out

Online Course Usage Report

Title	Category/Version	Language	Unique Users	Total Minutes	Total hours	# Attempts	Last Accessed
Pro/ENGINEER Wildfire 4.0 Update from Pro/ENGINEER Wildfire 3.0	Pro/ENGINEER Wildfire 4.0	English	9	59	0.99	9	Apr 16, 2008 9:58:13 AM
Application Orientation	Windchill ProjectLink 8.0	English	3	8	0.14	3	Apr 16, 2008 10:22:56 AM
Application Orientation	Windchill PDMLink 8.0	English	2	11	0.20	2	Apr 15, 2008 7:11:30 AM
Arbortext Content Manager 8.0 Business Administration	Arbortext 5.3	English	3	70	1.17	3	Apr 12, 2008 6:29:21 AM

> End-users can:

- Maintain a personal development plan
- Full-text search of available courses and course content
- Access Web-based Training
- Receive targeted development suggestions based on assessment results
- Easily share content via embedded email function
- View complete transcripts and Pro/FICIENCY results

The screenshot displays the Precision LMS search interface. At the top, there are navigation links for Home, Find Training, and Administration. A search bar contains the text 'swept blends' and a 'Search' button. A callout box labeled 'Full-text Search' points to the search bar. To the right, there are filter options for Category (Pro/ENGINEER), Version (Wildfire 3.0), Type (Online Course), and Language (English). Below the search bar, it indicates '19 results found in 5 courses'. The first result is 'Surface Modeling with Pro/ENGINEER Wildfire 3.0', which includes a description and a list of course modules. A callout box labeled 'Search results' points to this list of modules. The second result is 'Advanced Part Modeling with Pro/ENGINEER Wildfire 3.0', also with a description and a list of course modules.

PTC University eLearning Libraries Value Proposition

> Value Proposition

- Pro/Engineer eLearning Library for same money as a 3-day In-Centre course

> Benefits

- Available 24/7/365
- 100+ Standard & Advanced Courses
- Easily searchable modules and topics
- Lecture, Demonstrations, hands-on Exercises & Assessments format
- Testing, reporting and tracking built into courses and Learning Management System
- Live telephone support available

Pro/ENGINEER Wildfire 4.0 Update from Pro/ENGINEER Wildfire 3.0

Hide Course Map Fit view Exercise Mode Add Bookmark Email

Expand All Collapse All

- Introduction
- Lab and Demo Files
- Course Overview
- Part Enhancements
- Advanced Part Enhancements
- Sketcher Enhancements
- Assembly Enhancements
 - Introduction
 - Zone Enhancements
 - Axis Alignment Enhancements
 - Clipped State Enhancements
 - Frozen Component Enhancements
 - Assembly Family Table Enhancements
 - Simplified Representation Enhancements
 - Global Reference Viewer
 - Replace Component Enhancements
- Component Transparency Enhancements
 - Lecture
 - Demonstration
 - Procedure
- Active Component Enhancements
- Check Your Knowledge
- Drawing Enhancements
- Sheetmetal Enhancements
- Retake Assessment

1. Procedure: Component Transparency Enhancements

Scenario

Apply the Transparent Display style components of an assembly.

transparency transparency.asm

Task 1. Apply the Transparent Display style to the engine block front and rear components.

1. Select the cylinder.prt.
 - Click **View > Display Style > Transparent**.

2. Press CTRL and select the eng_block_rear.prt and the eng_block_front.prt.
 - Click **View > Display Style > Transparent**.
 - Notice that the transparency color is based on the existing model color.

- >Seamless connection from your work to learning
- >Access short eLearning topics while working within PTC products
- >Leverage comprehensive technical support Knowledge Base
- >Dynamic content delivery based on your current activity
- >Rigorously mapped for specific, accurate results



PTC University LearningConnector

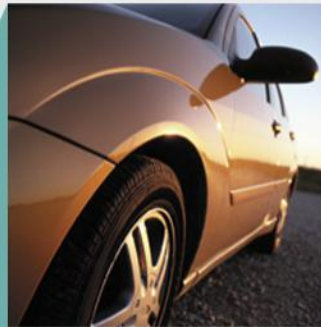
POINT. CLICK. LEARN...

Directly from your Pro/ENGINEER Desktop

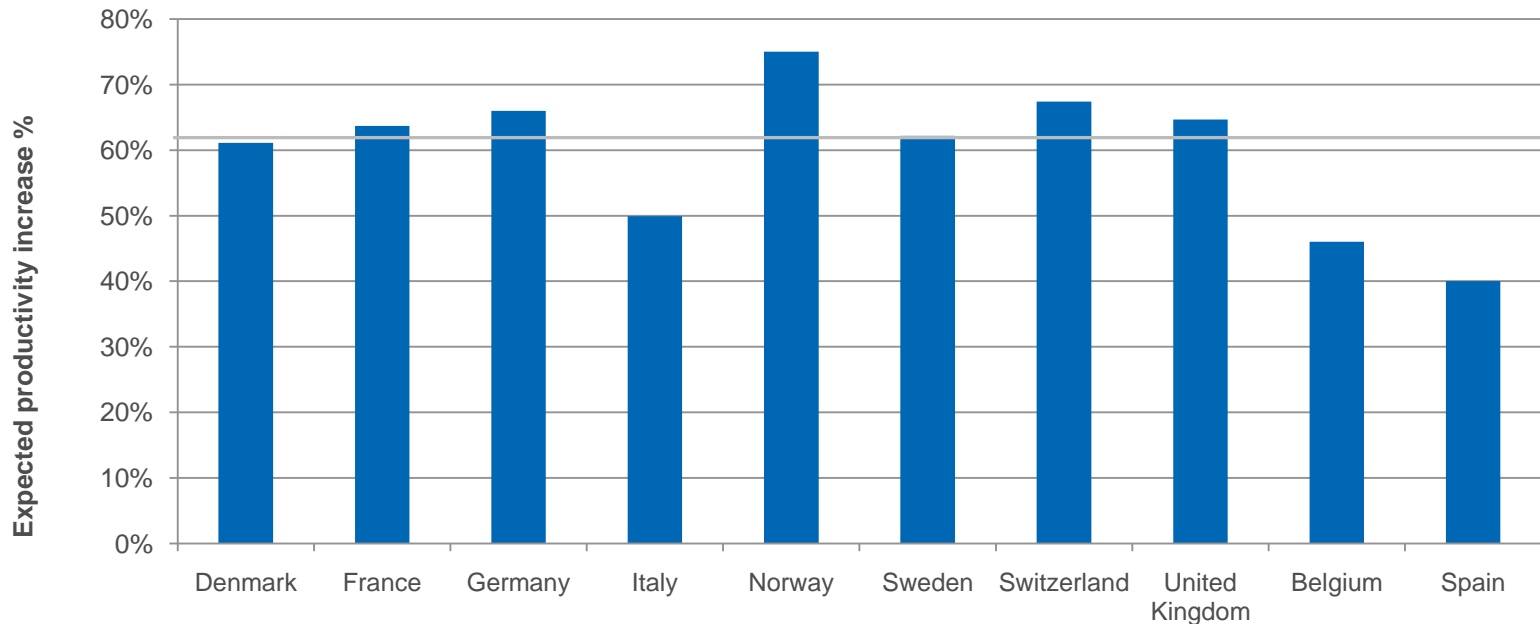
Design and Learn - Simultaneously



PTCUniversity Sweden



PTC Students expect their productivity to increase 63% on PTC software after training!*



“ The material covered in the training class was exactly what I expected and needed to learn. The instructor was able to address any issues promptly and effectively.”

- Staff Engineer, Stryker Instruments

Country

“ The course had excellent hands-on lab work, both step-by-step for initial learning and less structured project work to get us thinking independently”

- Sr. Engineer, Elliott Company

* Based on Customer Satisfaction survey completed by 2,500 students taking PTC Training Classes between April 1/09 and March 31/10.

PTC University Content and Infrastructure



eLearning Libraries

- 4,000 hours of quality content
- Supports all PTC Product lines
- Short, easy to use modules
- Assessments, reporting, measurement



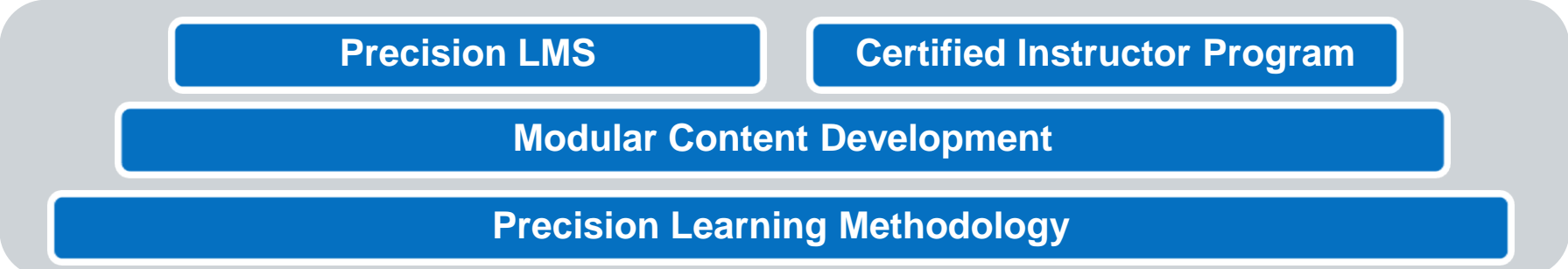
Precision Learning Programs

- Training Needs Analysis & Planning
- Configured or Custom Content
- Role-based Learning Paths
- Best Practice Academy



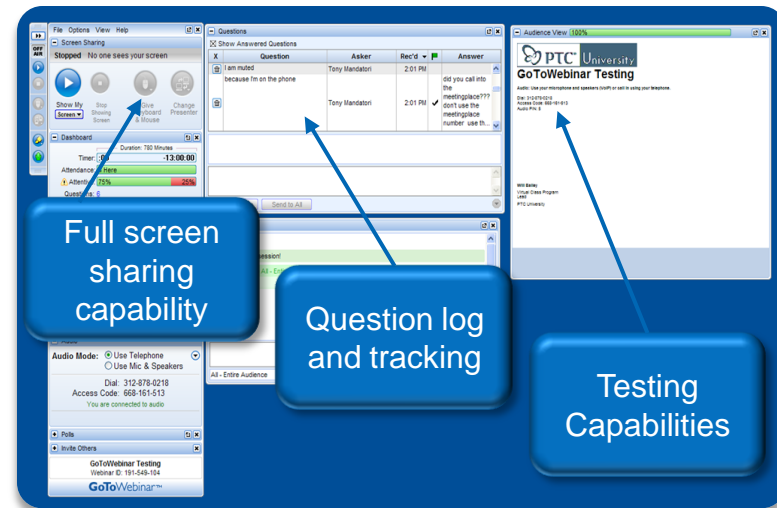
Instructor-Led Training

- Thousands of Topics
- 400+ Certified Trainers worldwide
- Traditional & Virtual Classes
- Public or Private



Instructor-led training delivered online

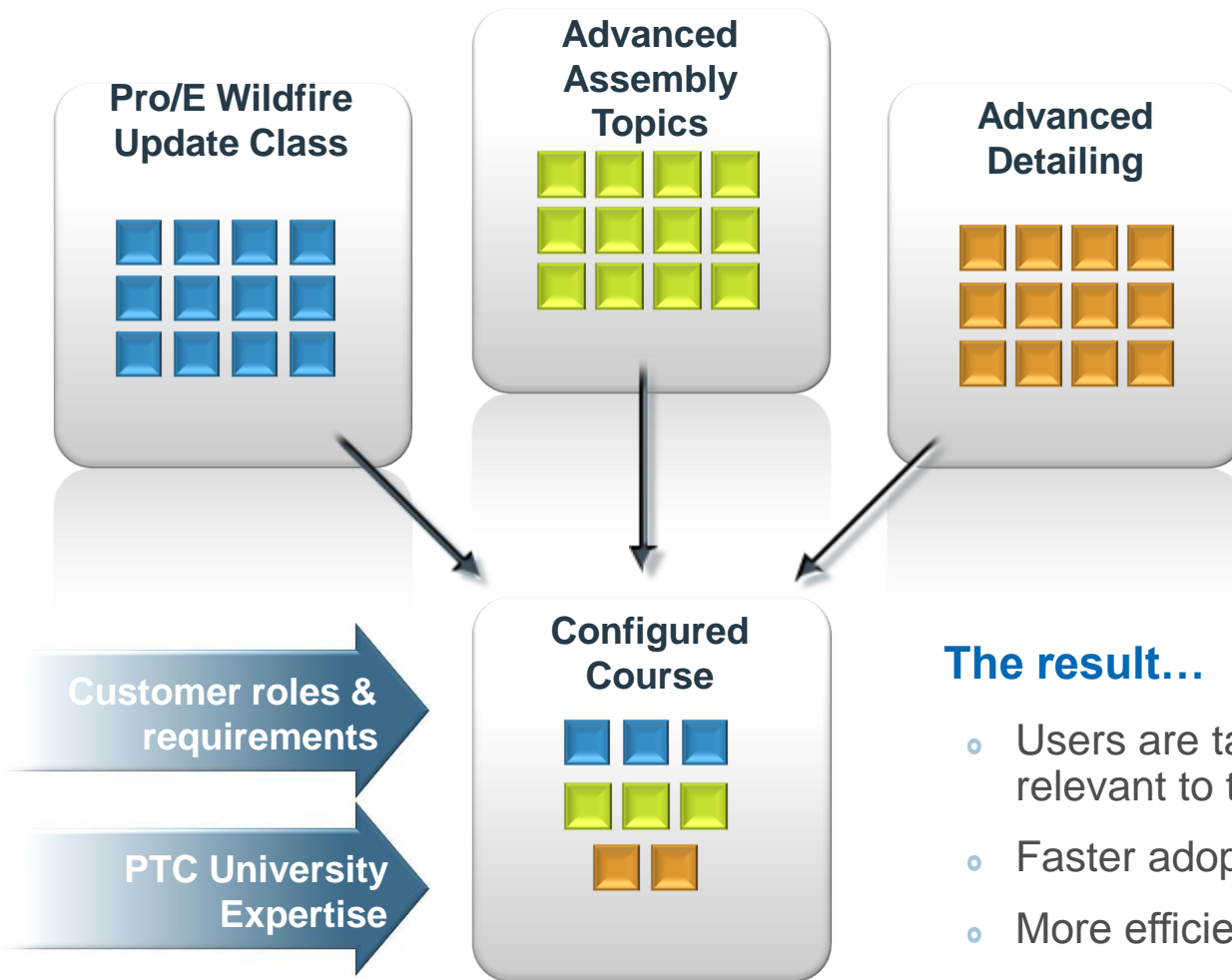
- Same superior content and instruction as traditional instructor-led classes
 - Right blend of lectures, demonstrations, hands-on instruction, and assessments
 - Available in 9 languages
- Learn while working – ½ day sessions enable application of new skills immediately after a class



Achieve more value from your training

- 15% reduction in total cost of training due to no travel costs
- 20% reduction in user downtime
 - No travel to / from class
 - Able to balance work / training





The result...

- Users are taught *only* material that's relevant to their job
- Faster adoption
- More efficient use of student's time

- > [Be Progressive]
 - Innovate your designs and thinking

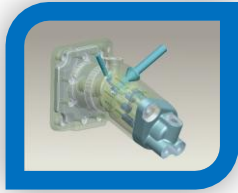
- > [Be Proficient]
 - Discover timesaving tips, tricks, and tools

- > [Be Proactive]
 - Enhance your skills, productivity and results

- > [Be Particular]
 - Learn from the experts

- > [Be Precise]
 - Know everything you need for your role

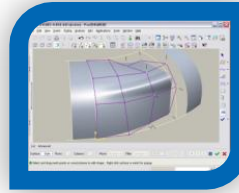




[Pro] Design Engineer



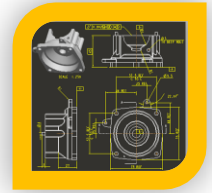
[Pro] Routed Systems Designer



[Pro] Conceptual Designer



[Pro] Assembly Designer



[Pro] Detailer

Advanced Modeling

Intro. Routed Systems Designer

Surface Modeling

Advanced Assembly Management

Detailing

Behavioral Modeling

Cabling

Freeform Surface Modeling

Mechanism Design

Piping

Mechanism Simulation

- All Tracks require either Intro or Update to Pro/ENGINEER Wildfire 4.0 or 5.0
- [Pro] Design Engineer, [Pro] Routed Systems Designer and [Pro] Conceptual Designer Expert Tracks require 2 additional modules / courses

<http://www.ptc.com/go/ptcusweden/>



- Johanna Dimitriadis

- jdimitriadis@ptc.com
- 031 87 76 92

PTC®

- Ditt förstahandsval för PTC utbildning
- Kunniga och certifierade instruktörer
- Flexibla utbildningsalternativ

PTC

Hur förblir du konkurrenskraftig i vår föränderliga globala värld?

Du arbetar med komplex produktutveckling i en global miljö, ditt företag behöver kompetent personal, som inte bara är välutbildad utan även innovativ och handlingskraftig. Ju bättre du kan tillgodose dig PTCs produkter, ju innovativare kan du vara i din produktutveckling.

Hos PTC University kan du lära dig allt om PTCs produkter!

PTC Universitys utbildningar leds av certifierade, pedagogiska instruktörer. Endast PTC University har tillgång till PTCs produktutveckling och konsultorganisation. Dets åkerställer att din utbildning innehåller den senaste informationen och de bäst anpassade övningarna.

Visste du att då du deltar i en PTC lärarledd standard kurs får du tillgång till samma kurs som eLearning

- under ett helt år utan extra kostnad!

➤ Är du uppdaterad inom Pro/ENGINEER? Testa dina kunskaper här

Nordic Training Schedule July-December 2010



Nordics - Training Schedule JULY - DECEMBER 2010

Training Information/Registration Contacts

Rasmus Thomsen - Inside Sales - Nordics: +46 31 877 692/ rthomsen@ptc.com

Pia Eriksen - Training Supervisor - Nordics: +45 43 27 06 00/ periksen@ptc.com

Pls. fax signed Registration form to +45 43 43 90 99 or e-mail periksen@ptc.com

If the class you need is not scheduled then please let us know and we will organise one for you

Pro/ENGINEER Wildfire 5.0 Courses

Course	Code	Length	Price	Location	Jul	Aug	Sep	Okt	Nov	Dec
Introduction to Pro/Engineer Wildfire 5.0	TRN-2232	5 days	SEK 16,500	Göteborg		30			1	
				Stockholm			4	29	6	
			NOK 14,000	Skellefteå				11		
				Sandvika		16	13		6	
Advanced Modeling with Pro/ENGINEER Wildfire 5.0	TRN-2238	3 days	SEK 9,900	Göteborg			13			1
				Stockholm		23		4	22	6
				Skellefteå						
							18	8	15	
Advanced Assembly Design with Pro/ENGINEER Wildfire 5.0	TRN-2234	3 days	SEK 9,900	Göteborg						
				Stockholm		30	20			
				Lund						
				Skellefteå						
Sheetmetal Design with Pro/Engineer Wildfire 5.0	TRN-2240	2 days	SEK 6,600	Göteborg				21		13
				Stockholm			16			
				Lund						

Thank You